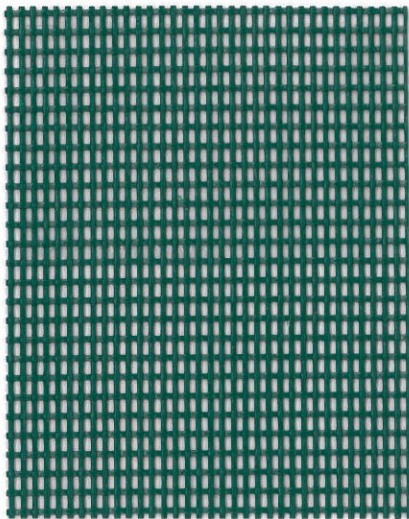


# PHIFERTEX®

## Casual Furniture and Awning Fabric

2015



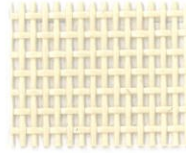
**SPRUCE GREEN C09**  
997171

- 54 inches wide, 11.7 oz. per sq. yd.
- Vinyl encapsulated woven polyester mesh.
- This mesh fabric shades approximately 70%, but you can still see thru it and it allows the breeze through.

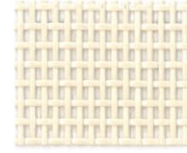
- Ideal for outdoor casual furniture, patio umbrellas, marine enclosures, breathable awnings and products where a strong, colorful mesh fabric is desired.
- California Technical Bulletin 117, SEC. E



**WHITE 000**  
997142



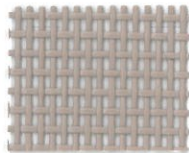
**ALMOND 186**  
997145



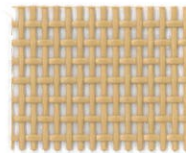
**GREY SAND X00**  
997235



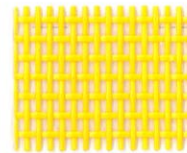
**ASH GREY X11**  
997150



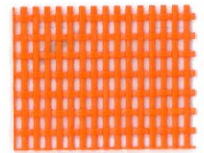
**SPICE A40**  
997136



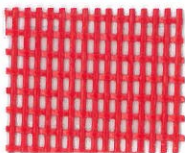
**CAMEL 812**  
997149



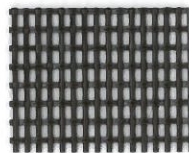
**YELLOW 406**  
997143



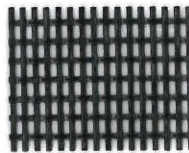
**ORANGE 412**  
997146



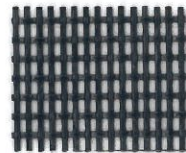
**RED M96**  
997173



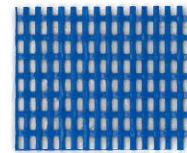
**BROWN 800**  
997148



**BLACK X04**  
997152



**NAVY G01**  
997147



**ROYAL BLUE G00**  
997141

## PHIFERTEX® PLUS

- 54 inches wide, 16 oz. per sq. yd.
- Vinyl encapsulated woven polyester mesh.
- Very similar to Phifertex, only it is made with a tighter weave.
- This fabric is designed especially for sling and umbrella applications and shades approximately 92.5%.
- California Technical Bulletin 117, SEC. E



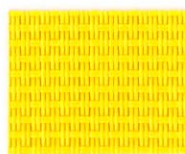
**SALSA KG4**  
997295



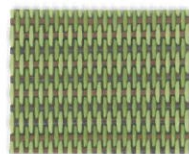
**METALLICA SALSA KK3**  
997302



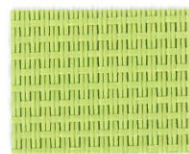
**SNAPPY KF4**  
997288



**YELLOW 406**  
997123



**DUPIONE KIWI DJ7**  
997557



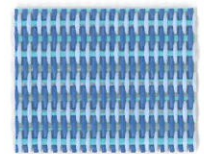
**GARDEN GREEN DB6**  
997289



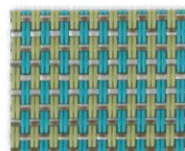
**HOLLY GREEN CL1**  
997122



**ROYAL BLUE G00**  
997125



**DUPIONE POOLSIDE L37**  
997555



**STRAW MAT BLUE LBY**  
997301



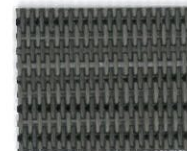
**DUPIONE SAPPHIRE L96**  
997316



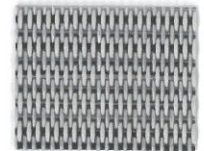
**NAVY PIER GP5**  
997124



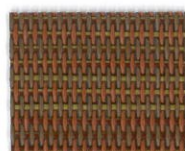
**BLACK X04**  
997298



**METALLICA SMOKE XXG**  
997314



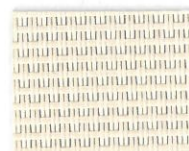
**METALLICA PLATINUM XUP**  
997464



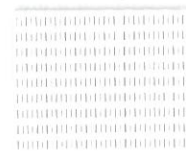
**DUPIONE SPICE KT1**  
997315



**STUCCO 0Y3**  
997129



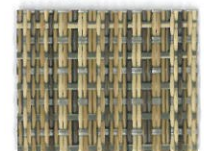
**GREY SAND X00**  
997108



**WHITE 000**  
997121



**METALLICA WHITE OHK**  
997300



**BURLAP BH4**  
997299

**TRIVANTAGE**

ORDER. DONE. GOOD CALL.



**DISTRIBUTION CENTERS: UNITED STATES**

Hayward, CA (800) 786-7607

City of Industry, CA (800) 841-0555

Denver, CO (800) 786-7609

Miami, FL (800) 786-7605

Lithia Springs, GA (800) 786-7606

Elmhurst, IL (800) 786-7608

Maryland Heights, MO (800) 786-7603

Somerset, NJ (800) 786-7602

Mebane, NC (919) 304-6810

Cleveland, OH (800) 786-7601

Irving, TX (800) 786-7610

Tukwila, WA (800) 213-1465

**CANADA**

Trican Corp. (800) 387-2851

[www.tricancorp.ca](http://www.tricancorp.ca)

**MEXICO**

Tunali Tec, Morelos (777) 362-0636

Jalisco (333) 657-3660

[www.tunalitec.com](http://www.tunalitec.com)

**CORPORATE OFFICE**

1831 North Park Avenue  
Glen Raven, NC 27217-1100  
(800) 786-1876

[www.trivantage.com](http://www.trivantage.com)

PHIFERTEX® IS A REGISTERED TRADEMARK OF PHIFER INCORPORATED.  
TRIVANTAGE® IS A REGISTERED TRADEMARK OF GLEN RAVEN, INC. 120314-LEE-999542